



ESB General Purpose Floor Platforms Series provides an economical solution to meet general industrial floor weighing up to 3000kg...

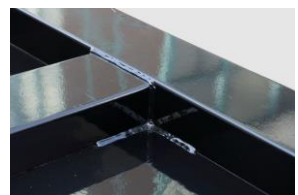
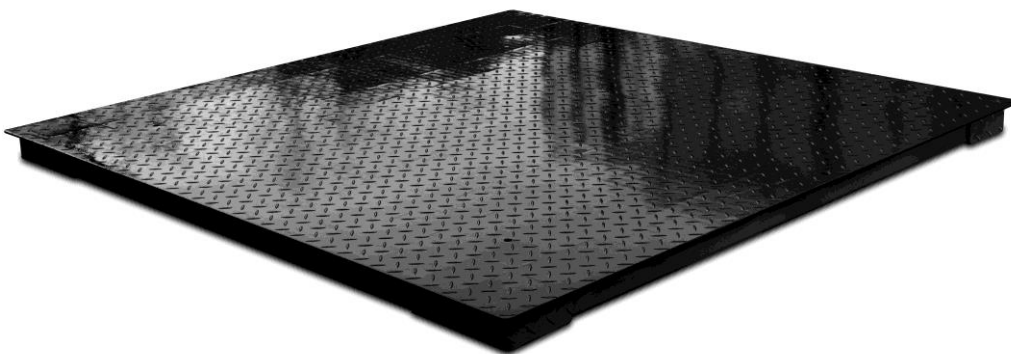
- 40CrNiMoA Alloy Steel Load Cells
- High Quality Epoxy Coating

Key Features

- Heavy Duty Structure & Construction
- Swivel Adjustable Feet to further Eliminate Weighing Errors due to Misalignment
- 40CrNiMoA Alloy Steel Load Cells to ensure Reliability & Durability
- Rugged Diamond Safety Tread Plate Deck Surface
- Surface Treatment = Epoxy Coating
- Construction Accuracy = Better than 0.25%

Quality, Structural Strength & Accuracy are Safeguarded & Guaranteed by: -

- Material Grade
- Material Thickness
- Tooling & Method used to handle Material Cutting, Blending ... etc.
- Smart & CNC Made Oversized Heavy Duty Load Cell Supporting & Mounting Blocks
- Strict Construction Accuracy Applied
- Smart & High Quality Stainless Steel Junction Box used



Accuracy, Durability & Reliability are always Built-in

ESB Series General Purpose Floor Platforms

Specifications

Model No.	Platform Size (mm)		Load Cell		
ESB-1010 (A, N)	1000 x 1000		Type: - <ul style="list-style-type: none"> A: - OIML / NTEP C3 approved N: - Non-Approved Assignment: - <ul style="list-style-type: none"> 4 x 500kg for Max = 0.5 ~ 1T 4 x 1000kg for Max = 1.5 ~ 2T 4 x 1500kg for Max = 3T 		
ESB-1012 (A, N)	1000 x 1200				
ESB-1212 (A, N)	1200 x 1200				
ESB-1215 (A, N)	1200 x 1500				
ESB-1515 (A, N)	1500 x 1500				
ESB-1520 (A, N)	1500 X 2000				
Nominal Capacity (Max)	0.5T	1T	1.5T	2T	3T
Adjusted Eccentric Accuracy (kg)	0.2	0.2	0.5	0.5	1.0
Structural Strength	Maximum = 3T; Safe Overload = 3.6T				
Material & Structural Data	All Material = Mild Steel Thickness: - <ul style="list-style-type: none"> Top Plate Thickness \geq 4.5mm Underneath Columns Thickness \geq 2.5mm Load Cell Support Blocks \geq 18.0 mm Width: - <ul style="list-style-type: none"> Width of Load Cell Mounting Columns = 120mm Width of Reinforce Columns = 100mm Overall Height: - <ul style="list-style-type: none"> 65mm (platform only) 96mm (completed with Load Cells and Adjustable Feet) 				
Construction Accuracy	Better than 0.25%				
Load Cell & Output	40CrNiMoA Alloy Steel Load Cells, 3mV/V				
Junction Box	JB-46S Stainless Steel Junction Box Included				
Signal Cable	5m 6-wire Shielded Cable Included				
Operating Environment	-10 ~ 40°C (14 ~ 104°F) Non-condensed R.H. \leq 85%				

In the interest of improvement, specifications may change prior to notice

Options

- Mild Steel Ramp
- Lifting Rings
- Pit Installation Frame

Order Code

Model No. – Nominal Capacity - Load Cell Type.

Examples -

- ESB-1010-1T-A for platform size = 1 x 1m; nominal capacity = 500kg; with approved load cells.
- ESB-1215-2T-N for platform size = 1.2 x 1.5m; nominal capacity = 2000kg; with non-approved load cells.



Fidelity Measurement Co., Ltd.
<http://www.fi-measurement.com>
 e-mail: info@fi-measurement.com

REV.: ESB/18/01/02